



Mild Steel Gate

Crafted from premium-grade mild steel, our gates are designed for outstanding strength, durability, and rust resistance. Featuring a high-quality powder-coated finish, we prioritize using superior materials to deliver a product built to last.

Discover the perfect balance of functionality and elegance with our gates. Elevate your space with refined sophistication while ensuring top-tier security.



Wide Range of Colours

Browse through our gate catalog to discover a vibrant array of stunning colors. From timeless neutrals to bold, eye-catching shades, we offer options to suit every style and preference.



Customizations Available

Our ATA ready-made gate designs showcase timeless elegance and classic beauty.

With an extensive selection of designs and customizable options, you can create the perfect gate to match your unique style and preferences!

MILD STEEL GATE REFERENCE



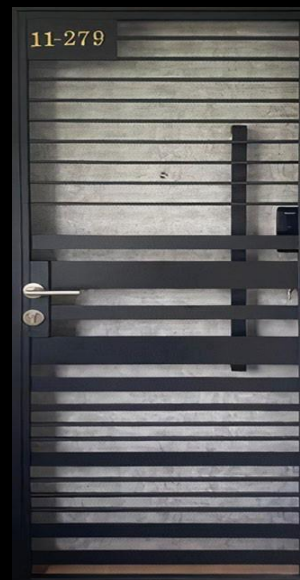
ATA ALUMINIUM



ATA-001
(3 X 7FT)



ATA-002
(3 X 7FT)



ATA-003
(3 X 7FT)



ATA-001
(4 X 7FT)



ATA-002
(4 X 7FT)



ATA-003
(4 X 7FT)

MILD STEEL GATE REFERENCE



ATA ALUMINIUM



ATA-004
(3 X 7FT)



ATA-005
(3 X 7FT)



ATA-006
(3 X 7FT)



ATA-004
(4 X 7FT)



ATA-005
(4 X 7FT)



ATA-006
(4 X 7FT)

MILD STEEL GATE REFERENCE



ATA ALUMINIUM



ATA-007
(3 X 7FT)



ATA-008
(3 X 7FT)



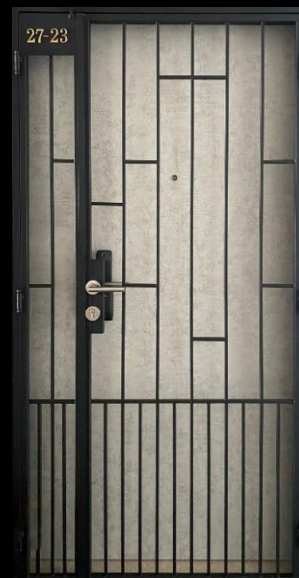
ATA-009
(3 X 7FT)



ATA-007
(4 X 7FT)



ATA-008
(4 X 7FT)



ATA-009
(4 X 7FT)

MILD STEEL GATE REFERENCE



ATA ALUMINIUM



ATA-010
(3 X 7FT)



ATA-011
(3 X 7FT)



ATA-012
(3 X 7FT)



ATA-010
(4 X 7FT)



ATA-011
(4 X 7FT)



ATA-012
(4 X 7FT)

MILD STEEL GATE REFERENCE



ATA ALUMINIUM



ATA-013
(3 X 7FT)



ATA-014
(3 X 7FT)



ATA-015
(3 X 7FT)



ATA-013
(4 X 7FT)



ATA-014
(4 X 7FT)



ATA-015
(4 X 7FT)

MILD STEEL GATE REFERENCE



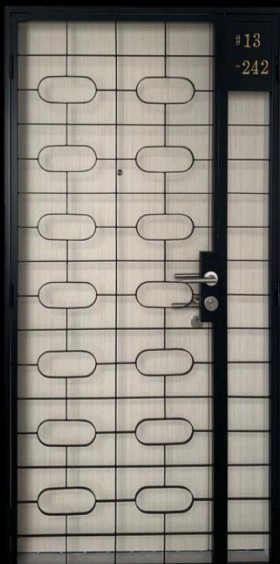
AT ALUMINIUM



ATA-016
(3 X 7FT)



ATA-017
(3 X 7FT)



ATA-016
(4 X 7FT)



ATA-017
(4 X 7FT)

MILD STEEL GATE REFERENCE



ATA ALUMINIUM



ATA-018
(3 X 7FT)



ATA-019 (3 X 7FT)
View in from right (\\ \\)



ATA-018
(4 X 7FT)



ATA-019 (3 X 7FT)
View in from left (///)

MILD STEEL GATE REFERENCE



ATA ALUMINIUM



ATA-019 (4 X 7FT)
View in from right (\\\\)



ATA-020 (3 X 7FT)
Tempered glass gate



ATA-019 (4 X 7FT)
View in from left (///)



ATA-020 (4 X 7FT)
Tempered glass gate

Unit Number Laser Engraving



AT ALUMINIUM



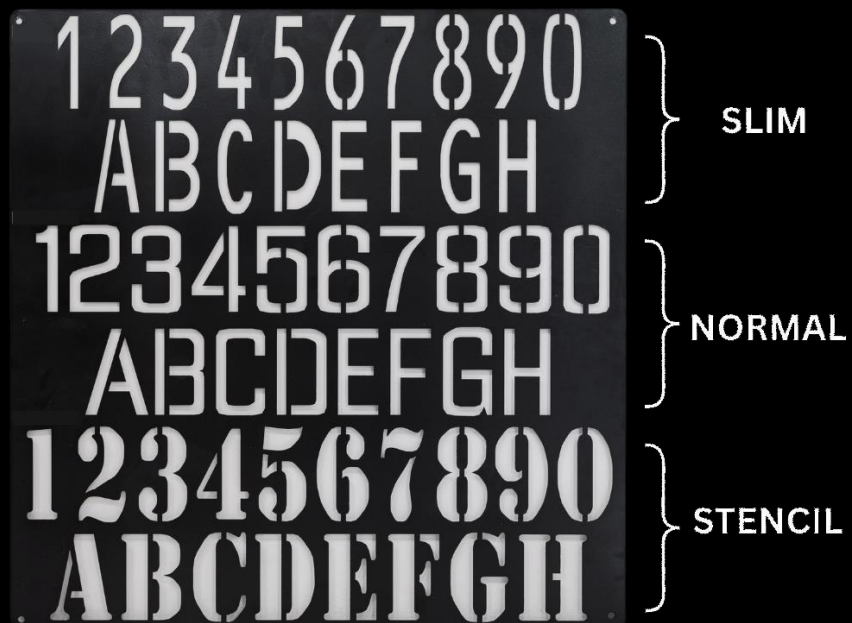
Slim



Normal



Stencil



ADD ONS



ATALUMINIUM



Gate design with bottom plate (300mm) Gate design with laser engraving Gate design with even flushed side plate



Gate design with uneven flushed side plate

Gate design with digital lock backing (3 x 7 feet)

Gate design with digital lock backing (4 x 7 feet)